

# Conservation Commentary

*Meigs Soil & Water Conservation District*

Volume XVI, Issue 1

[www.meigsswcd.com](http://www.meigsswcd.com)

Winter 2015

## **Barnett, Shenefield honored at Meigs SWCD Annual Meeting**



COOPERATOR OF THE YEAR - Steve Barnett, Reedsville, owner/operator of Fuzzy Bottoms Farms, center, was recognized by Carrie Crislip, Natural Resources Conservation Service district conservationist for Meigs County, right, as the 2014 Outstanding Cooperator. Also assisting with the presentation was Jake Bodimer, representing Farm Credit Services.



LIFETIME COOPERATOR AWARD – Rex Shenefield, left, of Langsville was awarded the inaugural Meigs SWCD Lifetime Cooperator Award for his lifelong commitment to soil and water conservation in Meigs County. Shenefield was a former longtime member of the Meigs SWCD Board of Supervisors, serving in many county, area and state leadership roles. He is shown with current Meigs SWCD Board of Supervisors President Joe Bolin, Rutland.



NEW BOARD MEMBER SWORN-IN—Keith Bentz, Racine, takes the oath of office as a new member of the Meigs Soil and Water Conservation District Board of Supervisors. He was elected last fall at the district's annual meeting and banquet.

## **County Clean-up Day Set for May 2**

The next Meigs County Clean-Up Day for county residents will be held Saturday, May 2 at the Rock Springs Fairgrounds. Clean Up Days are sponsored by the Meigs County Board of Commissioners, Meigs SWCD, Meigs County Health Department and the Meigs County Grants Office with a grant obtained through the Ohio Environmental Protection Agency.

***The mission of the Meigs Soil and Water Conservation District is to provide assistance for the wise use of our natural resources for present and future generations.***

# Support our affiliate members!



**Peoples Bank**  
Pomeroy-Pomeroy Motor Bank  
740-992-2133  
[www.peoplesbancorp.com](http://www.peoplesbancorp.com)



**OHIO VALLEY BANK**  
14 locations to serve you.  
OVBC.COM




**Farmers Bank**  
[www.fb.com](http://www.fb.com)  
Pomeroy 740-992-2136  
Tuppers Plains 740-667-3161  
Gallipolis 740-446-BANK (2265)  
Mason 304-773-6400  
Point Pleasant 304-674-8200

**Forest Run Ready Mix**  
"Quality Concrete • On Time Delivery"  
  
32760 TR 202  
Racine, Ohio 45771 (740) 992-2067

**Millersport Agri Service**  
The Hoover Family  
10221 Lancaster-Newark Road  
Millersport OH 43046  
(740) 467-2424  
DMI Tillage Equipment Farm Fans and Dryers  
Sunflower Tillage Equipment Westfield Augers  
Vicon Hay Making Equipment Kongslide Grain Vacs  
Great Plains Drills and Sprayers  
Kinze Corn Planters  
Grain Systems Inc. Bins



**CROSS & SONS FARM EQUIPMENT**  
10248 COUNTY RD. 84  
JACKSON, OH 45640  
Phone (740) 286-1966  
[www.crossandsonsequip.com](http://www.crossandsonsequip.com) (740) 286-6451

**ATHENS MEDICAL ASSOCIATES**  
Douglas D. Hunter MD  
207 5th Street  
Racine OH 45771  
740-949-2683  


**Family OXYGEN & MEDICAL EQUIPMENT**  
Your local provider  
Gallipolis 740-446-0007 Jackson 740-286-0007 Athens 740-594-7000

Buckeye Rural Electric Cooperative, Inc.  
4848 State Route 325 South  
P.O. Box 200  
Rio Grande, OH 45674  
  
Your Touchstone Energy® Cooperative 

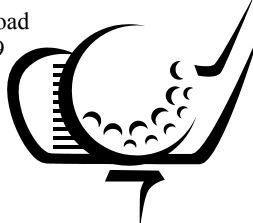
**MARKPORTER**  
  
Pomeroy, Ohio  
Sales: 740-444-4135  
Service: 740-444-4136  
[markportergm.com](http://markportergm.com)


**AEP AMERICAN ELECTRIC POWER**  
**Mountaineer Plant**  
New Haven, WV


**Fox's Pizza Den**  
  
Main Street, Rutland, 740-742-7405

  
**Brown Brothers Agency Inc.**  
Nationwide Insurance  
514 E. Main St.  
Pomeroy, OH 45769  
Tel 740-992-2318  
Fax 740-992-2002  
[brownd18@nationwide.com](mailto:brownd18@nationwide.com)  
On Your Side

**Birchfield Funeral Home**  
212 Main St.  
P.O. Box 188  
Rutland, OH 45775  
740-742-2333  


**MEIGS COUNTY GOLF COURSE**  
33080 Wills Hill Road  
Pomeroy OH 45769  
740-992-6312  
  
John McGee  
Owner

**Caudill Chipping Inc.**  
(740) 978-8157  
35788 State Route 324  
Hamden, OH 45634  


Insurance Plus Agencies Inc.  
114 Court Street  
Pomeroy OH 45769  
740-992-6677  
Agent Bill Quickel  
Across from the Courthouse  
[insplus@insurance-plus.com](mailto:insplus@insurance-plus.com)  
[www.insurance-plus.com](http://www.insurance-plus.com)  


**O'Bleness Health System**  
  
OhioHealth O'Bleness Hospital  
Athens, Ohio



**Montgomery Trailer Sales**  
Langsville

**Quality Print Shop**  
Middleport

**Leading Creek  
Conservancy District**  
Rutland

**Baum Lumber Company**  
Chester

**Story Law Office**  
Pomeroy

**Thomas Do-It Center**  
Gallipolis

**Vinton County National Bank**

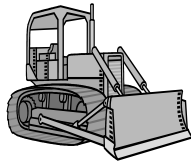
**The Vaughan Agency**  
Pomeroy

**D.A. Boston Excavating**  
Reedsville

**Ohio Valley Electric Corp.**  
**Kyger Creek Plant**  
Cheshire

**3R Industries Inc.**

27938 Tower Rd.  
Langsville OH 45741



740-669-4836

**PDK CONSTRUCTION**

34070 CREW ROAD  
POMEROY OH 45769



740-992-6451

**Sickels Septic Tanks Inc.**

10637 Oxley Road  
Athens OH 45701



740-593-8302

**YOUR BUSINESS HERE!**

Interested in being a Meigs SWCD  
affiliate member? Do you want your  
business listed on this page?  
If so, contact the Meigs SWCD at 740-  
992-4282.

Fox's Pizza Den on the River  
Pomeroy

AEP Ohio/Gavin Plant  
Cheshire

Little, Sheets & Barr, LLP  
Pomeroy

Racine Optometric Clinic  
Racine

Michael Swiger—State Farm Insurance  
Middleport

Valley Lumber  
Middleport

Hill's Food Mart  
Racine

**'Leading from the Past:  
Stories of the Leading  
Creek Watershed'**

*"Leading from the Past: Stories of  
the Leading Creek Watershed"* are  
still available for sale at \$15 each.

Supplies are limited.

The 200-plus page book is a prod-  
uct of the Stories of the Leading Creek  
Watershed Project which culminated  
with the unveiling of the book on Nov.  
4, 2010.

The project, funded by the Ohio  
Humanities Council, includes stories  
from a variety of watershed residents.

**SWCD equipment for sale, rent**

**The following items are available for sale:**

- Marking Flags — \$.10 each
- Topographical Maps — \$8 each
- Meigs County Platbooks — \$10.00
- Ohio Pond Management Handbooks — \$3 each
- Digital Soil Survey CD—\$10 each
- 'Leading from the Past—Stories of Leading Creek' Book—  
\$15



**The following equipment is available for rent (subject to scheduling and availability):**

- |                                    |                                       |                    |
|------------------------------------|---------------------------------------|--------------------|
| John Deere No-Till Drill (10-foot) | \$90 min. plus \$9/acre over 10 acres | 70 HP tractor min. |
| Tye No-Till Drill (7 foot)         | \$80 min. plus \$8/acre over 10 acres | 45 HP tractor min. |
| Brillion Seeder (8-foot)           | \$80 min. plus \$8/acre over 10 acres | 40 HP tractor min. |
| Lime Spreader                      | \$50 min. plus \$2/ton over 25 tons   | 60 HP tractor min. |
| Forester Tree Planter              | \$25 per day                          | 25 HP tractor min. |
| Planter Bars                       | Free with \$20 returnable deposit     |                    |
| Box Trap                           | Free with \$30 returnable deposit     |                    |

**A \$100 delivery/  
pickup fee will be  
assessed for  
equipment rentals  
outside of the county.**

*All equipment must be scheduled through the Meigs SWCD office at 992-4282 during regular business hours for delivery Mon-  
day through Friday between the hours of 8 a.m. and 4 p.m. The minimum fee will be assessed if equipment is delivered  
and not used. A \$10 charge per month will be added to all bills after 60 days.*

# Meigs County—Pick It Up! Program begins second year

## Other clean-up events for 2015 announced

The Meigs SWCD is the county agency tasked with assisting private landowners in the county in protecting their soil and water resources, but like most conservation districts throughout the state, the district also takes on other functions.

In the case of the Meigs SWCD, that includes administering a litter control program mostly focusing on roadside litter.

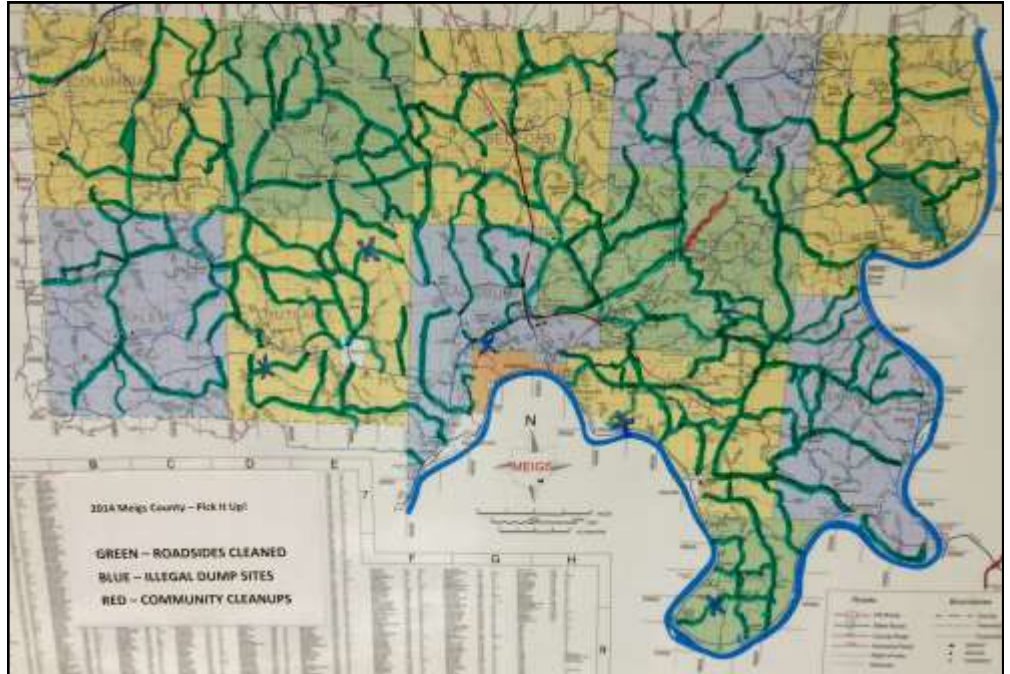
The Meigs County – Pick It Up! Program, administered by the Meigs Soil and Water Conservation District in partnership with the Meigs County Board of Commissioners and the Gallia-Jackson-Meigs-Vinton Solid Waste Management District, started on its second year on Jan. 2.

In 2014, workers cleaned alongside 430 miles of road, including all 256.5 miles of county road, and collected 1,828 bags of litter. In addition, the crew targeted six illegal dumpsites and picked up 690 tires.

The district also participated in two clean-up days in 2013 and 2014, in conjunction with the Meigs County Health Department and the Meigs County Grants Office, which together gathered almost 45 tons of tires, 27.8 tons of waste, and 11.2 tons of scrap metal. In addition, the district has coordinated more than a dozen Leading Creek Stream Sweeps and Ohio River Sweeps.

The Meigs County - Pick It Up! Program came to life in late 2013.

Meigs County—Pick It Up! is a three-part program with the first part involving a dedicated crew physically cleaning up litter. The second part involves helping community groups do their own clean-up projects, while the third part involves education in local schools.



**2014 ROAD CLEANUPS—**This map shows the county and township roads that were cleaned up in 2014 under the Meigs County—Pick It Up! Program. Workers cleaned up 430 miles of road, collecting 1,828 bags of litter in the process, and removed 690 tires and cleaned six illegal dump sites.

SWCDs are all about partnerships, so the County Engineer's Office helped out by putting new decals on the work truck. We also had workers assigned through the Department of Health and Human Services.

Today the program has three part-time employees.

“The Meigs County Commission continues to be thrilled with the progress of the Pick it Up program,” said commission President Randy Smith. “These employees work hard seemingly to fight a constant battle.

“While it may seem to some that it's not worth it because folks continue to litter, these employees continue to do what they can to make Meigs County beautiful in spite of the inconsideration of some and for that the commission and the citizens of the county are grateful.”

Jenkins stressed that this program is strictly for roadside litter on county and township

roads and not for residential cleanup or cleanup along state highways.

**Any group interested in doing their own cleanup as a community service project can call the Meigs SWCD office at 740-992-4282, weekdays between 8-4:30 p.m. to make arrangements. Meigs SWCD will supply bags, gloves, high-visibility vests and will collect the bags left along the road, while a group leader will be responsible for picking up supplies, coordinating the cleanup and keeping track of the location, number of volunteers, and the number of bags collected.**

Other upcoming events in Meigs County include the 15th annual Leading Creek Stream Sweep, which will be held April 25, 9 a.m. to noon at the Meigs SWCD Conservation Area on New Lima Road between Rutland and Harrisonville.

The fourth Meigs County Clean-up Day will be held May 2, 9 a.m. to 1 p.m. at the Rock Springs Fairgrounds. TVs will be accepted.

In addition the annual Ohio River Sweep will be held June 20, 9 a.m. to noon.



**Meigs County—Pick It Up! Crew, from left: Corey King, Joe Foley and Bill Foley.**



# Get Started with NRCS

## Do you farm or ranch and want to make improvements to the land that you own or lease?

Natural Resources Conservation Service offers technical and financial assistance to help farmers, ranchers and forest landowners.

### 1 Planning

To get started with NRCS, we recommend you stop by your local NRCS field office.

We'll discuss your vision for your land.

NRCS provides landowners with free technical assistance, or advice, for their land. Common technical assistance includes: resource assessment, practice design and resource monitoring. Your conservation planner will help you determine if financial assistance is right for you.

### 2 Application

We'll walk you through the application process. To get started on applying for financial assistance, we'll work with you:

• To fill out an AD 1026, which ensures a conservation plan is in place before lands with highly erodible soils are farmed. It also ensures that identified wetland areas are protected.

- To meet other eligibility certifications.

Once complete, we'll work with you on the application, or CPA 1200.

Applications for most programs are accepted on a continuous basis, but they're considered for funding in different ranking periods. Be sure to ask your local NRCS district conservationist about the deadline for the ranking period to ensure you turn in your application in time.

*USDA is an equal opportunity provider and employer.*

### 3 Eligibility

As part of the application process, we'll check to see if you are eligible.

To do this, you'll need to bring:

- An official tax ID (Social Security number or an employer ID)
- A property deed or lease agreement to show you have control of the property; and
- A farm tract number.

If you don't have a farm tract number, you can get one from USDA's Farm Service Agency. Typically, the local FSA office is located in the same building as the local NRCS office. You only need a farm tract number if you're interested in financial assistance.

### 4 Ranking

NRCS will take a look at the applications and rank them according to local resource

concerns, the amount of conservation benefits the work will provide and the needs of applicants.

### 5 Implementing

If you're selected, you can choose whether to sign the contract for the work to be done.

Once you sign the contract, you'll be provided standards and specifications for completing the practice or practices, and then you will have a specified amount of time to implement. Once the work is implemented and inspected, you'll be paid the rate of compensation for the work if it meets NRCS standards and specifications.

To find out more contact **Carrie Crislip, District Conservationist for Meigs County** at **740-992-6646** or by email at **Carrie.Crislip@oh.usda.gov**

## USDA Accepting Applications for Conservation Stewardship Program

The U.S. Department of Agriculture will make \$100 million available this year through the Conservation Stewardship Program (CSP).

Applications are accepted all year; however, interested farmers and forest landowners should submit applications by **February 27, 2015**, to ensure consideration for this year's funding (applications received after that date will be considered for future funding). "CSP provides an incentive for farmers and private forest managers who already practice conservation on their land to achieve even higher levels of stewardship," said Terry Cosby, Ohio's NRCS State Conservationist. "By addressing multiple resource concerns, such as soil erosion, air, and water quality, landowners maintain or increase the productivity of their operations on a more sustainable landscape."

The 2014 Farm Bill expanded CSP's conservation activity list that offers participants more options to meet their conservation needs and protect the natural resources on their land. These conservation activities, called enhancements, include cover crops, intensive rotational grazing, and wildlife friendly fencing.

Farmers and forest landowners interested in submitting applications for CSP should make an appointment with the local NRCS conservationist to complete a resource inventory of their land to determine the conservation performance for existing and new conservation activities. This information will be used to establish program eligibility, rank applications, and calculate payments.

For more on technical and financial assistance available through conservation programs, visit [www.nrcs.usda.gov/GetStarted](http://www.nrcs.usda.gov/GetStarted) or, in Meigs County you may contact District Conservationist, Carrie Crislip at 740-992-6646.

Bulk Rate  
U.S. Postage Paid  
Pomeroy OH 45769  
Permit #101  
Non-Profit

Meigs SWCD  
113 E Memorial Drive  
Suite D  
Pomeroy OH 45769



**Meigs Soil and Water  
Conservation District**  
113 E Memorial Dr., Suite D  
Pomeroy OH 45769  
*Est. 1943*  
[www.meigswcd.com](http://www.meigswcd.com)

**District Staff**  
Steve Jenkins, Program  
Administrator/Technician  
Darla Staats, Administrative  
Assistant  
Jim Freeman, Wildlife Specialist/  
Watershed Coordinator  
Jenny Ridenour, Education Coordinator/  
District Technician  
Michelle Schultz, Receptionist  
Bill Foley, Pick It Up! Coordinator  
Joe Foley, Pick It Up!  
Corey King, Pick It Up!

**NRCS**  
Carrie Crislip,  
District Conservationist

**Board of Supervisors**  
Joe Bolin, Chairman/Fiscal Agent  
Bill Baer, Vice Chairman/Fiscal Agent  
Keith Bentz, Secretary/Treasurer  
Tonja Hunter, Member  
Kim Romine, Member

**County Commissioners**  
Michael Bartrum  
Tim Ihle  
Randy Smith

**USDA's nondiscrimination statement**  
The U.S. Department of Agriculture (USDA) prohibits discrimination in all its programs and activities on the basis of race, color, national origin, sex, religion, age, disability, political beliefs, sexual orientation, and marital or family status. (Not all prohibited bases apply to all programs.) Persons with disabilities who require alternative means for communication of program information (Braille, large print, audiotape, etc.) should contact USDA's TARGET Center at (202) 720-2600 (voice and TDD). To file a complaint of discrimination, write USDA, Director, Office of Civil Rights, Room 326-W, Whitten Building, 1400 Independence Avenue, SW, Washington, D.C. 20250-9410 or call (202) 720-5964 (voice and TDD). USDA is an equal opportunity provider and employer.

**Meigs SWCD Calendar of Events**

Regular meetings of the Meigs SWCD Board of Supervisors are generally held at 11:30 a.m. the fourth Thursday of each month at the SWCD office, 113 E Memorial Drive, Suite D, Pomeroy. Dates and times are subject to change.

Feb 16-President's Day-Office Closed  
Feb 26 - Meigs SWCD Board of Supervisors regular meeting  
March. 26 Meigs SWCD Board of Supervisors regular meeting  
April 23- Meigs SWCD Board of Supervisors regular meeting  
April 25- Leading Creek Stream Sweep  
May 2- Clean Up Day



**Conservation Commentary is a publication  
of the Meigs Soil and Water  
Conservation District.**  
To subscribe or unsubscribe from Conservation  
Commentary, contact the Meigs Soil and Water  
Conservation District at 740-992-4282.

## Seed Mixes

**Erosion Control Seed Mix** (2 lb. bag) - A blend of Birdsfoot Trefoil, Timothy, Tall Fescue, Annual Ryegrass, Alsike Clover and Red Top. Excellent substitute for crownvetch. For severe erosion control measures. Covers 2000 sq. ft.

**Bird & Butterfly Seed Mix** (1 oz. packet) - A blend of different annual and perennial wildflower varieties designed to attract both birds and butterflies. Covers 250 sq. ft.

**Showy Northeast Native Wildflower & Grass Mix** (1 oz. packet) - A mix of native wildflowers and prairie grasses that will provide a wonderful display of color from spring through summer. This full sun/part shade mixture contains drought resistant species that attain an average height of 2-3 ft. Excellent for native meadows and wildflower patches. Covers 200 sq. ft.

## Wildlife Food Plot Seed Mix

**Create Food Plots for Wildlife!!** (25 lb. bag) - Plant this mixture of sorghum, millet, soybeans, field pea, sunflower, buckwheat & foxtail to provide a supplemental food supply for wildlife. This mixture is an excellent choice for the conservation-minded landowner who wants to attract wildlife. Covers ½ acre.

## Tree Packets

**Native Flowering Packet** (2 each of the following species-10 seedlings total-No substitutions)- Redosier Dogwood, Mountain Laurel, White Flowering Dogwood, Sweetshrub, Strawberry-bush

## Deciduous Trees

**American Chestnut** (*Castanea dentata*) Help restore this majestic tree to its native range! A broadleaf species, leaves are 6 to 8 inches long. In autumn, large spiny burs produce 1 to 5 nuts. Minimum seed-bearing age is 4 years. Commonly found on hill slopes in gravelly or rocky, well-drained soils. Rapid growing trees that can reach 60 to 100 ft. at maturity. Prior to nearly being wiped out by chestnut blight, American Chestnuts were very important to wildlife, providing much of the fall mast for Whitetail Deer and Wild Turkeys. Trees typically grow very straight with few low branches making it an excellent timber species. These seedlings are secured from the West Virginia State Tree Nursery and are considered pure American Chestnut. This species has shown a resistance to chestnut blight but it is too soon to claim resistance.

**Black Cherry** (*Prunus serotina*) Grows to 60+ ft. at maturity. Tolerates a wide variety of growing conditions.

**Black Walnut** (*Juglans nigra*) Reaches up to 75 ft. Grows well in most locations, but prefers fertile, deep soils.

**Northern Red Oak** (*Quercus rubra*) Reaches 80+ ft. at maturity. Prefers full sun and acidic soil.

**Sugar Maple** (*Acer saccharum*) Reaches heights over 100 ft.. Prefers partial to full sun and well-drained soil.

**White Oak** (*Quercus Alba*) Grows to 100ft or more. Grows best on south and west facing slopes. Great for wildlife.

## Coniferous Trees

**White Spruce** (*Picea glauca*) Grows to 60-75 ft at maturity. Fast growing and will tolerate many growing conditions.

**Loblolly Pine** (*Pinus taeda*) Grows to 60-90 ft. tall with a 25-35 ft. spread. Grow quickly, and in a wide variety of soil and moisture conditions. They are drought tolerant.

**Canadian Hemlock** (*Tsuga canadensis*) Grows 60-75 ft. at maturity. Grows best in cool, moist locations.

**Colorado Blue Spruce** (*Picea pungens* var. *glauca*) This large evergreen with a moderate growth rate can reach heights of 100+ ft. Prefers fertile, moist soil in full sun, but will tolerate dry, well-drained areas as well.

**Eastern White Pine** (*Pinus strobus*) An outstanding timber pine due to its large size (80+ ft. at maturity) and fast growing ability.

**Norway Spruce** (*Picea abies*) Fastest growing spruce. 100 ft at maturity. Grows well at most sites.

**Scotch Pine - Lake Superior Blue** (*Pinus sylvestris*) Medium-size pine that can grow to 60 ft. at maturity. Prefers well-drained soil and full sun.

**Virginia Pine** (*Pinus Virginiana*) A small to medium-sized tree that reaches a mature height of up to 50 ft. Prefers moderate to well-drained clay, loam, or sandy soils and elevations below 2,800 ft.

## Fruits and Mushrooms

Fuji/Gala Apples Dwarf varieties, Bruce/Methley Plums, and Shiitake Mushroom

## Groundcover

English Ivy and Pachysandra

For a detailed description of any of the trees and/ or shrubs available, you can contact the Meigs Soil and Water Conservation District office Monday through Friday, 8:00 a.m. to 4:30 p.m. We will mail a full brochure with descriptions of height at maturity, sun and soil preference, and landscape usefulness.

Tree	Trees per Packet	# Packets	\$/Packet	Total \$
American Chestnut	5		\$15.00	
Black Cherry	25		\$17.00	
Black Walnut	25		\$17.00	
Northern Red Oak	25		\$17.00	
Sugar Maple	25		\$17.00	
White Oak	25		\$17.00	
White Spruce	25		15.00	
Loblolly Pine	25		\$15.00	
Canadian Hemlock	25		15.00	
Colorado Blue Spruce	25		\$15.00	
Eastern White Pine	25		\$15.00	
Norway Spruce	25		15.00	
Scotch Pine	25		\$15.00	
Virginia Pine	25		\$15.00	
Native Flowering Packet	10		15.00	
Gala/Fuji Apple *DWARF	2		\$18.00	
Bruce/Methley Plums * DWARF	2		\$18.00	
Shiitake Mushrooms	1 kit		\$25.00	
English Ivy	100/tray		\$25.00	
Pachysandra	100/tray		\$25.00	
Erosion Control Seed Mix	2 lbs		\$15.00	
Wildflower and Grass Mix	1 oz		\$6.00	
Bird & Butterfly Seed Mix	1 oz		\$5.00	
Wildlife Food Plot Seed Mix	25 lbs		\$40.00	
Bat House	each		\$20.00	
Eastern Bluebird Box	each		\$20.00	
Tree Marking Flags	each		\$.10	
Plantskydd-ready to use spray	1 quart		\$25.00	
Plantskydd-soluble powder	2.2 lbs		\$40.00	

Name: \_\_\_\_\_

Address: \_\_\_\_\_

City/State/ Zip \_\_\_\_\_

Phone/Email: \_\_\_\_\_

Total

Make checks  
payable to:  
**Meigs SWCD**

**How to Order:**  
Orders will be taken  
until **Friday,**  
**February 27, 2015.**

Tentative order  
distribution date is the  
second week in April.  
Phone calls will be made  
to confirm exact pick up  
dates and times. Be sure  
to include the number of  
packets ordered and your  
correct address and  
telephone number on the  
order form.

*Please complete the  
enclosed order form and  
mail it with your  
payment to:*

**Meigs SWCD**  
**113 E. Memorial Dr.**  
**Suite D**  
**Pomeroy, Ohio**  
**45769**

You may also place orders  
by stopping in our office  
between the hours of 8:00  
a.m. and 4:30 p.m.,  
Monday through Friday. If  
you have any questions,  
please call 740-992-4282.

**Seedling Size**

Tree and shrub seedlings  
should be between 6-18  
inches tall, depending on  
the species. Seedlings  
should be planted within 5  
days after pick-up and then  
watered regularly.

Description of the Seed  
mixes, trees and Native  
Flowering Packet are on  
other side.

