

**Southeast Ohio's Destination  
For Conservation Education!**



**Meigs SWCD  
Conservation Area**



**2.5 acre wetland  
built in 2008.**

**"Turtle Rock" is  
one interesting  
rock formation  
found at the  
Meigs SWCD  
Conservation  
Area.**

**Meigs Soil and Water Conservation District  
33101 Hiland Road  
Pomeroy OH 45769  
(740) 992-4282 [www.meigsswcd.com](http://www.meigsswcd.com)**



**The Mission of the Meigs Soil and Water Conservation District is to provide assistance for the wise use of our natural resources for present and future generations.**

Located in rural, scenic Meigs County, Ohio between the communities of Rutland and Harrisonville, the Meigs SWCD Conservation Area consists of 174 acres of land ranging from wetlands, prairies, streams and ridges, and a little bit of almost everything in between.



Youngsters examine macroinvertebrates caught in the wetland during a field trip to the Meigs SWCD Conservation Area.



The Meigs SWCD Conservation Area is open to the public and permission is not necessary for general use, hiking, bird watching, and other non-consumptive activities.

Group and school activities including educational field trips, “field days,” and other outings should be scheduled through Meigs SWCD Education Coordinator Jenny Ridenour who may be able to assist you or help avoid potential scheduling conflicts. Call 740-992-4282 for more information.



The Conservation Area features a 1.5-mile hiking path and a quarter-mile walking path that may be used by the public at any time. A new 56-by-30-foot shelterhouse was recently constructed and may also be used by the public. It may either be used on a first-come, first-served basis or reserved for a small fee. For more details on shelter-

house use call the Meigs SWCD at 740-992-4282.

Contributions for maintenance and improvements to the Conservation Area may be made in care of the Meigs Soil and Water Conservation District at 33101 Hiland Road, Pomeroy OH 45769.

# History of the Meigs SWCD Conservation Area

Aerial photos taken in 1939 and during the 1950's and 1970's show different land use practices and habitat throughout the years at the Meigs SWCD Conservation Area.

In 1939, the land was primarily used for produce, agriculture and pasture with relatively small areas of woodland. In the early 1960's the area was strip mined for coal. Although the mine was never reclaimed, vegetation managed to return on its own. However, much evidence of the property's mining history remain.

A vegetable cannery was located on the property prior to the 1940's. A concrete wall foundation in the field near the parking lot is all that remains of the building.

There was once a dam across Little Leading Creek on the Conservation Area. Two pieces of concrete, one on each side, and a concrete slab on the bottom of Little Leading



**Prairie Planting 2008**

Creek are still visible today.

For many years the land lay vacant, but in 2003 the Meigs Soil and Water Conservation District bought the property through a grant from the Clean Ohio fund. Later that year the overgrown fields were cleared, and the parking lot was constructed the following year. In 2006 the Pauline H. Atkins Memorial Trail was dedicated in honor of this community leader and member of the Meigs SWCD Board of Supervisors. The year 2007 saw construction of the wetland.

Native prairie grasses and wildflowers were planted in spring, 2008, and the quarter-mile walking path installed later that fall. The new shelter house was constructed in fall, 2010.

Future plans call for the construction of a latrine and other improvements.



**Walking Path constructed 2008**

---

## Conservation Area Partners



Wise Use and Protection  
Ohio Department of Natural Resources



**AMERICAN  
ELECTRIC  
POWER**  
GAVIN PLANT



**Rutland Township Board of Trustees**

**BOY SCOUTS OF AMERICA**  
Troop 299

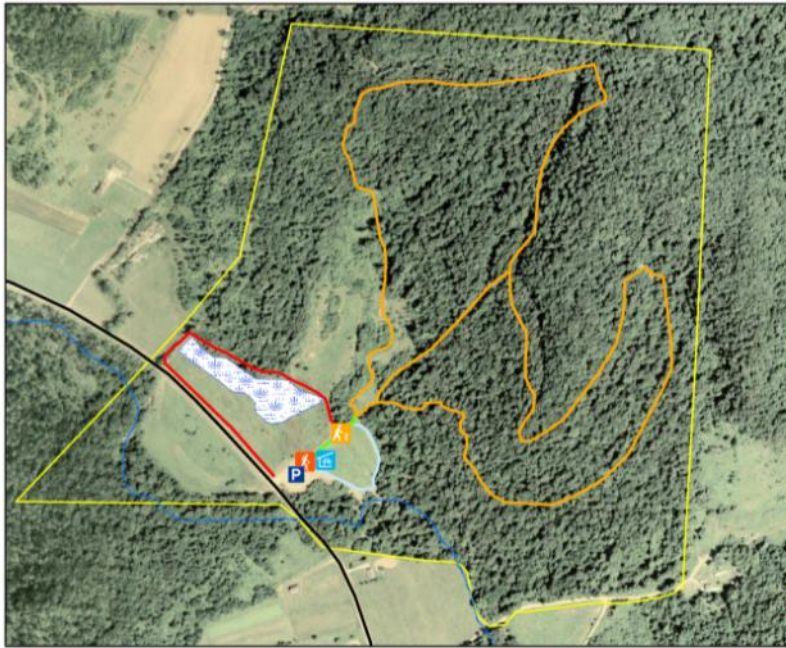


**Buckeye Hills  
RC&D**

Baum Lumber Company  
G&W Plastics  
PDK Construction  
Homecreek Enterprises



## Meigs Soil and Water Conservation Area



### Legend

- Parking Lot
- Shelterhouse
- Trail Direction Sign
- Trailhead Sign
- Connector Trail
- Little Leading Creek
- Little Leading Creek Trail
- New Lima Road
- Pauline Adkins Trail
- Wetland Trail
- Wetland

410 0 410 820 1,230 1,640  
Feet

## BEFORE YOU GO!

- Wear weather-appropriate clothing and footwear suitable for outdoor activity; bring adequate sunscreen and insect repellent.**
- Anticipate steep hills, mud, water, rocks, briars, poison ivy, bugs, snakes and other natural hazards.**
- Avoid playing near high walls and never enter old coal mining auger holes or other entrances.**
- There are NO RESTROOMS or sanitary facilities unless portable toilets and hand-washing stations are reserved in advance.**
- Generally, cell phones DO NOT work at the Conservation Area.**
- People with physical disabilities, very old or very young or simply “out of shape” will find portions of the Conservation Area to be inaccessible. Know your limitations! The Meigs SWCD will attempt to make reasonable accommodations.**
- Other people or hunters may be using the Conservation Area at the same time as you; be courteous and respectful to others you encounter enjoying the Conservation Area.**
- ABSOLUTELY NO ATVs are permitted. Park only in designated areas.**
- Property boundaries are marked with white paint or flagging on trees. Please respect our neighbors by not trespassing.**
- Please leave the Conservation Area cleaner than you found it. Take only photographs, leave only footprints. Please don't litter.**
- Please report any observed illegal activity at the Conservation Area to the Meigs County Sheriff's Department or the Meigs SWCD.**

### USDA's nondiscrimination statement

The U.S. Department of Agriculture (USDA) prohibits discrimination in all its programs and activities on the basis of race, color, national origin, sex, religion, age, disability, political belief, sexual orientation, and marital or family status. (Not all prohibited bases apply to all programs.) Persons with disabilities who require alternative means of communication of program information (Braille, large print, audiotape, etc) should contact USDA's TARGET Center at (202) 720-2600 (voice and TDD). To file a complaint of discrimination, write USDA, Director, office of Civil Rights, Room 326-W, Whitten Building, 1400 Independence Avenue, SW, Washington, D.C. 20250-9410 or call (202) 720-5964 (voice and TDD). USDA is an equal opportunity provider and employer.